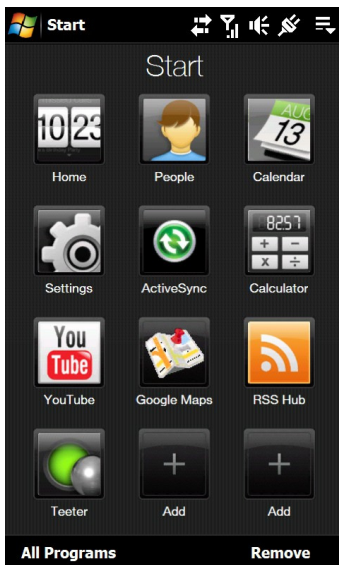
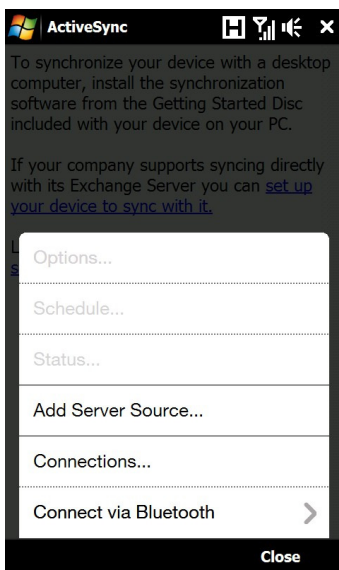


HTC Touch Pro 2 Exchange Email Setup

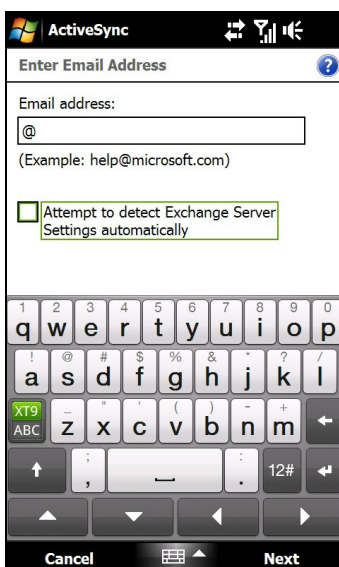
In preparation for configuring Email through your Company Exchange Server, you will need to acquire the **Exchange Server Address** and **Domain Name** from your IT department.



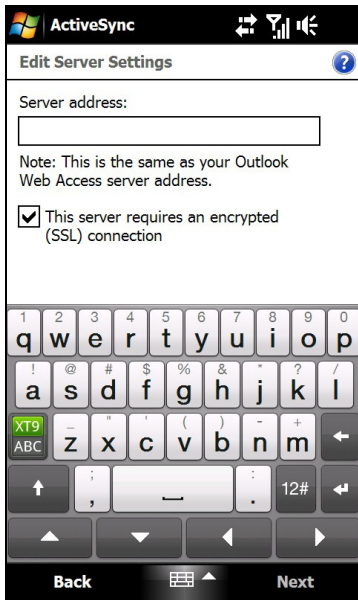
- From the Home Screen, open the **Start Menu** and select **ActiveSync**



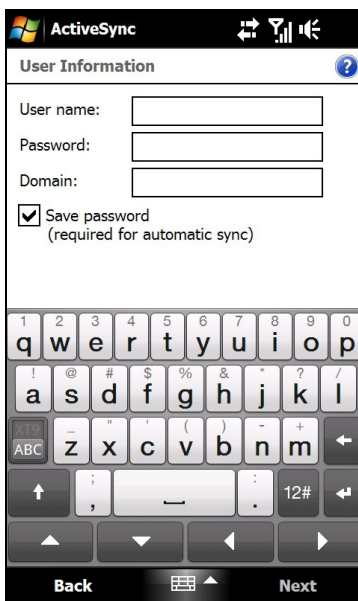
- Press **Menu > Add Server Source**



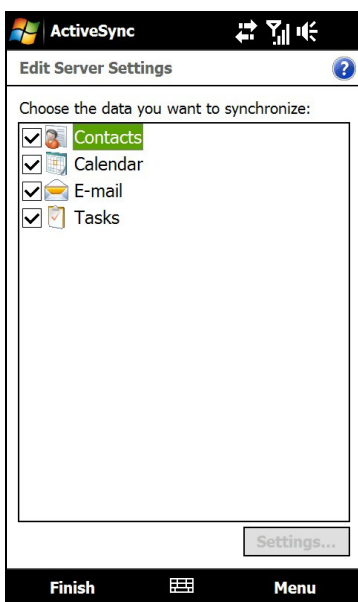
- Enter your **Email Address**
- Untick the box that says **Attempt to detect Exchange Server Settings automatically**
- Press **Next**



- Enter the **Server Address** given to you by your IT Department
- Press **Next**



- Enter your **User name, Password** (Note: this is the same username and password used to log onto your work PC)
- Enter the **Domain** given to you by your IT Department
- Press **Next**



- Select the items you wish to Synchronise with, then press **Finish**